

TIMED ONLINE

# Equipment AUCTION



OPENS: Friday, May 8  
CLOSES: MONDAY, MAY 18 | 10AM 2020

LOCATION: 14997 16th St SE, Hunter, ND 58048

PREVIEW: Friday, May 8 – Monday, May 22. LOADOUT: Monday, May 18 – Friday, May 22

### TRACK TRACTOR

2002 Case-IH STX450 Quadtrac, luxury cab, red leather, powershift, 4 hyd., return flow, 1000 PTO, front/rear diff lock, Clear View caps, 30" tracks, shows 2,805 hrs., S/NJEE0100344

### 4WD TRACTORS

1982 IHC 6588, 2+2, CAH, 4 hyd., 3 pt., 1000 PTO, 18.4-38 single tires, shows 8,708 hrs., S/N8884  
1980 Versatile 950 Series II, CAH, 12 spd., 4 hyd., return flow, 650/75R32 duals at 80%, 5,544 hrs., S/N110986

### MFWD TRACTORS & LOADER

1991 John Deere 3155, quad range, 2 hyd., 3 pt., PTO, John Deere 740 loader, joystick control w/grapple, rear wheel weights, 13.6-28 front tires, 18.4-38 rear tires, shows 17,255 hrs., S/NL0315SU731272  
1988 Case-IH 7120 Magnum, CAH, powershift, 2R, 3 hyd., 3 pt., 540/1000 PTO, diff lock, front suitcase weights, 16.9-28 front tires, 480/80R42 press steel duals at 60%, shows 454 hrs., S/NJJA0005210

### 2WD TRACTORS & LOADERS

1967 John Deere 4020, open station, diesel, powershift, 2 hyd., 3 pt., 540/1000 PTO, Farmhand F258 hyd. loader, 8' bucket w/grapple, 16.9-38 tires, 9,064 hrs., S/NT213P158823R  
1979 John Deere 950, open station, diesel, turf tires, no live PTO, no hyd., no power steering, 4,369 hrs., S/N09505006919  
1976 IHC 1066, CAH, 2 hyd., 3 pt., 540/1000 PTO, front suitcase weights, 18.4-38 single tires, 8,195 hrs., S/N5724  
IHC 560, open station, gas, 1 hyd., 3 pt., PTO, Du-Al loader & grapple  
1979 IHC 186, hydro, 3 hyd., 3 pt., 540/1000 PTO, 480/80R38 single tires, 14,657 hrs., OH at 10,000 hrs., S/N11054

### GPS EQUIPMENT

John Deere 2630 display, SF2, Section Control, 1,920 hrs., S/NPCGU2UD451302  
John Deere 2630 display, SF2, Surface Water Pro, 2,389 hrs., S/NPCGU2UD434350  
John Deere 2600 display, SF2, S/NPCGU26G158898  
(3) John Deere StarFire 3000 receivers, SF2 ready, RTK, w/RTK radio, S/NPCGT3TA110998, S/NPCGT3TA634325, S/NPCGT3TA320122  
Brown box w/processor, SF1 card  
(4) ATU 200 Universal steering wheels  
ATU 100 Universal steering wheel

### COMBINES

2006 John Deere 9760 STS, PRWD, bullet rotor, deluxe cab & controls, HD variable spd. feeder house, integrated auto steer, 22-1/2' high cap, unloading auger, John Deere hopper ext., fine cut chopper, 800/70R38 single front tires, 600/65R28 rear tires, 3,393 sep. hrs., 5,554 hrs., S/NH09760S715673  
1991 John Deere 9600, CAH, DAS, DHH, fore/aft, chaff spreader, Cary bin ext., 20' auger, fine cut chopper, 14.9-24 rear tires, 18.4-42 straddle duals, 70%, 4,631 sep. hrs., 7,055 engine hrs., Greenlight program in place, S/NH09600X640556

### HEADS & HEADER TRAILER

2009 John Deere 612C non-chopping corn head, 12x30", knife rolls, hyd. deck plates, single pt. hookups, S/NH0612CX730421  
2006 John Deere 635F flex head, 35', low dam, AWS air bar, hyd. fore/aft, finger reel, AHH, single pt. hookup, S/NH00635F715987  
1998 John Deere 930 flex head, hyd. fore/aft, stubble lights, poly bottom, multi-point 00/10 Series hookups, bent drum, S/N681196  
2003 John Deere 930R rigid head, 30', w/9' sunflower pans, tall sides & back, multi-point hookups, S/NH00930R701233  
1995 John Deere 914 pickup head w/Rakeup pickup, 00/10 Series hookups, S/NH0914WX660280  
Hart header trailer, 30', single pole

### GRAIN CART & GRAVITY WAGON

2002 Unverferth 8200 grain cart, 16' corner auger, roll tarp, 1000 PTO, 30.5-32 single tires  
Huskee gravity wagon, 325 bu., 10 ton, 4-wheel running gear

### NO-TILL DRILL

1997 John Deere 1850 no-till drill, 30', 7-1/2" & 15" spacing, 1900 tow-between commodity cart, 195 bu. split tank, hyd. fill auger, variable rate, SS meters, full run blockage, SeedStar monitor, 400 gal. poly tank, hyd. pump, tramline setup w/John Deere rate controller, Haukaas sidearm markers, 23.1-26 diamond tires, drill S/N671843, cart S/N675556

### PLANTER

John Deere 7000 planter, 12x30", front fold, 1.6 bu. boxes, spring down pressure, liquid fertilizer, in-furrow John Deere 250 population monitor, (2) 200 gal. poly tanks, Demco ground drive pump, precision vacuum, 2 pt. hitch, hyd. markers

### TILLAGE EQUIPMENT

2006 Salford RST vertical tillage, 30', 8-wave blades, tandems across, rolling baskets, weight pkg., 3-bar harrow, S/N06670  
John Deere CCA cultivator, 14' IHC 183 vibrashank cultivator, 12x30", rolling shields, disc stabilizers, gauge wheels  
Melroe hyd. fold harrow, 50'  
John Deere S-tine tree cultivator, 8', 3 pt.  
John Deere 712 mulch tiller, 14', 5-bar spike harrow  
John Deere plow & packer, 5x14", trip beam

### EXCAVATOR & FORKLIFT

2008 Komatsu PC160LC-7 excavator, cab w/heat, hyd. thumb, 60" bucket, 28" tracks, 6,945 hrs., S/NKMTPC187L55K45068  
Yale 80UF forklift, propane, 8,000 lb., pneumatic dual front tires, S/N564361

### SEMI TRACTORS & BOX TRUCKS

1993 Volvo WIA64T, integrated sleeper, N14 Cummins, 9 spd., engine brake, air ride, diff lock, cruise, wet kit, 190" WB, 11R22.5 tires on steel rims, 900,563 miles  
1988 IHC 2375 single axle day cab, 6 cyl. Cummins, 9 spd., spring ride, 5th wheel plate, wet kit, 184,210 miles

### SEMI TRACTORS & BOX TRUCKS

1989 Freightliner cabover, 3406 Cat, 9 spd., engine brake, air ride, diff lock, wet kit, 11R22.5 tires on steel rims, 753,605 miles  
1975 Ford LN9000 twin screw, 855 Cummins, 6 spd., 3rd axle pusher, air up/down, 22' Cascade box, hoist, roll tarp, 3 pc. end gate, 10:00-20 rear tires, 13/80R20 steering axle, 253,130 miles  
1980 IHC 1900 twin screw, 466 gas, 5&2 spd., 20'x60" Buffalo box, hoist, combo gate, roll tarp, plumbed for drill fill, 10:00-20 tires, 68,529 miles  
1965 Chevrolet single axle, 6 cyl., 5 spd., 14' wood box, hoist

### HOPPER BOTTOM & OTHER TRAILERS

1976 Timpte Super Hopper tandem axle hopper bottom trailer, 40'x68", spring ride, electric Shur-Co roll tarp, electric trap openers, 11R24.5 tires on steel rims  
1990 Fontaine steel flatbed, 45', air ride, bale sides, 11R22.5 tires on steel rims  
1978 IHC 10-42 tandem axle lowboy trailer, 42'x96", 10' top deck, 9' rear hyd. beavertail, spring ride, 8.25-15 tires  
Tandem axle flatbed, 40', spring ride, Nova 11R22.5 tires on steel rims  
1974 Hickory King tandem axle gooseneck livestock trailer, 20'x6', divider gate  
2001 Starlite HD tandem axle trailer, 83", 2' beavertail, wood deck, ramps, 8-hole rims

### SPRAYER

2002 Hardi Commander, 90' boom, full hyd., 1,200 gal. tank, triple nozzle bodies, 4-section shut-off, inject tank, rinse tank, adj. axle, PTO high pressure pump, Hardi auto rate monitor, S/N9471

### NH3 APPLICATOR, CHEMICAL & FERTILIZER EQUIPMENT

2010 John Deere 2510S Residue Manager, strip till, 12x30", 6 run, NH3 dry & liquid, vari-rate, Raven cold flow, full run monitor, tandems across, rolling choppers, HD rear hitch  
1996 Krohnert tandem axle SS tanker trailer, spring ride, 7,200 gal. tank, Honda 3" transfer pump, 3" electric hose reel, 11R24.5 tires on aluminum rims  
Single axle chemical trailer, 28'  
Jones band spray bar, 12 row, 3 pt., w/300 gal. enamel tank, 12v dump  
(2) 3,000 gal. liquid fertilizer tanks  
10,000 gal. fertilizer tank

### HAY EQUIPMENT

1999 New Holland 1431 discbine, 13', hydro swing, 1000 PTO, rubber rollers, drawbar hitch, S/N634790  
2002 John Deere 567 round baler, twine tie, 1000 PTO, hyd. lift pickup, 31x13.5-15 flotation tires  
1990 John Deere 435 round baler, twine or net wrap, 540 PTO, pickup, 31x13.5 flotation tires, S/NE00435X860397  
1976 New Holland 276 small square baler, 540 PTO  
Allen 8111 hyd. rake, twin basket, hyd. fold, S/N1-0014  
John Deere 350 sickle mower, 7', 3 pt.

### SWATHERS

1976 Versatile 400 swather, 18', MacDon finger reel, hydro, Ford 6 cyl. Industrial, S/N18107  
Versatile 10 pull-type swather, 20'

### LIVESTOCK EQUIPMENT

Gehl MF5205 mixer wagon, 540 PTO, LH discharge, Digi-Star EZ2000 scale, 395/85R20 tires, S/N16001  
1993 Haybuster H1100E self-contained tub grinder, Cat diesel, corn attachment, 5th wheel single axle trailer

### SEED TENDER & GRAIN HANDLING EQUIPMENT

2008 Unverferth 3750 tri-axle SeedRunner, twin compartment, torsion susp., belted 180 degree fill tube conveyor, electric start Honda motor, Digi Star EZ2000 scale, roll tarp, S/ND48680118  
Neco grain cleaner, (2) sets screens, 1 phase, 220v, fill & screening augers, cleanout auger  
DK grain vac, 5", 540 PTO, cleanup pkg., S/N223259  
2008 CMC power takeout, 7-1/2 hp. electric w/power sweep  
Mayrath auger, 62'x10", mechanical swing hopper, hyd. lift  
Mayrath auger, 52'x10", 10 hp. electric bottom drive  
Mayrath auger, 62'x8", 7-1/2 hp. electric bottom drive  
Mayrath auger, 52'x8", bottom drive, PTO  
Mayrath auger, 50'x8", bottom drive  
Lode King twin compartment drill fill, 18', hyd. augers

### HOPPER BIN & AERATION EQUIPMENT

Hopper bin, 6,500 bu., Micada hopper, steep pitch, air tube  
(4) Keho fans, 7-1/2 hp. Caldwell fan, 5 hp. Caldwell fan, 3 hp.  
Bin sweep, 21', 5 hp. electric

### SCRAPER & LASER EQUIPMENT

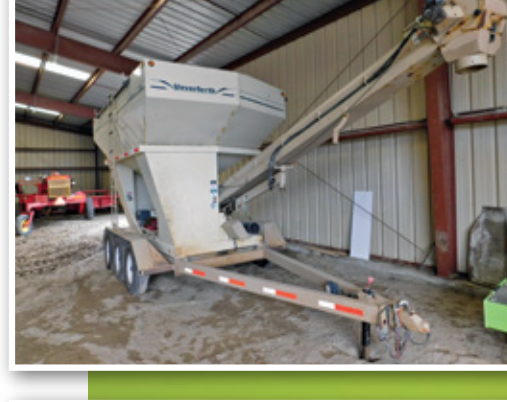
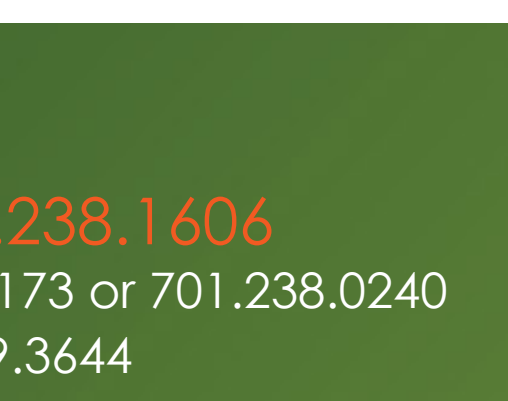
BIL box scraper, 12', hyd. tilt & lift  
AGL laser, grade stick, tripod, 1/2 mile radius  
Laser cart, 2-wheel

### OTHER EQUIPMENT

Farm King 9600 snowblower, 96", double auger, hyd. spout, 540 PTO, S/N9042504  
Woods RM90 grooming mower, 3 pt., 540 PTO  
John Deere 777 Z-Trak zero turn lawn tractor, ROPS, 27 hp., 60" deck, 735 hrs., S/NTC0777B051022  
Pleasure Products trailing yard sprayer, 12v pump, boom & spray wand

### TANKS, TIRES & FARM SUPPORT ITEMS

(2) 10,000 gal. diesel fuel tanks, Gasboy Keyrol pump  
1,000 gal. fuel tank, Tuthill 110v pump  
(2) 500 gal. fuel tanks, Gasboy 110v pumps  
(3) 1,500 gal. poly tanks  
(4) 14.9-46 tires & rims for 6588  
(2) 14.9-46 tires & rims for 1066  
(2) Honda transfer pumps, 5-1/2 hp.  
Speedo posthole auger, 9" & 12" bits



SteffesGroup.com

Steffes Group, Inc., 2000 Main Avenue East, West Fargo, ND 58078



TERMS: All items sold as is where is. Payment of cash or check must be made sale day before removal of items. Statements made auction day take precedence over all advertising. \$35 documentation fee applies to all titled vehicles. Titles will be mailed. Canadian buyers need a bank letter of credit to facilitate border transfer. Scott Steffes ND81, Bob Steffes ND82, Brad Olstad ND319, Max Steffes ND999, Justin Ruth ND2019

